

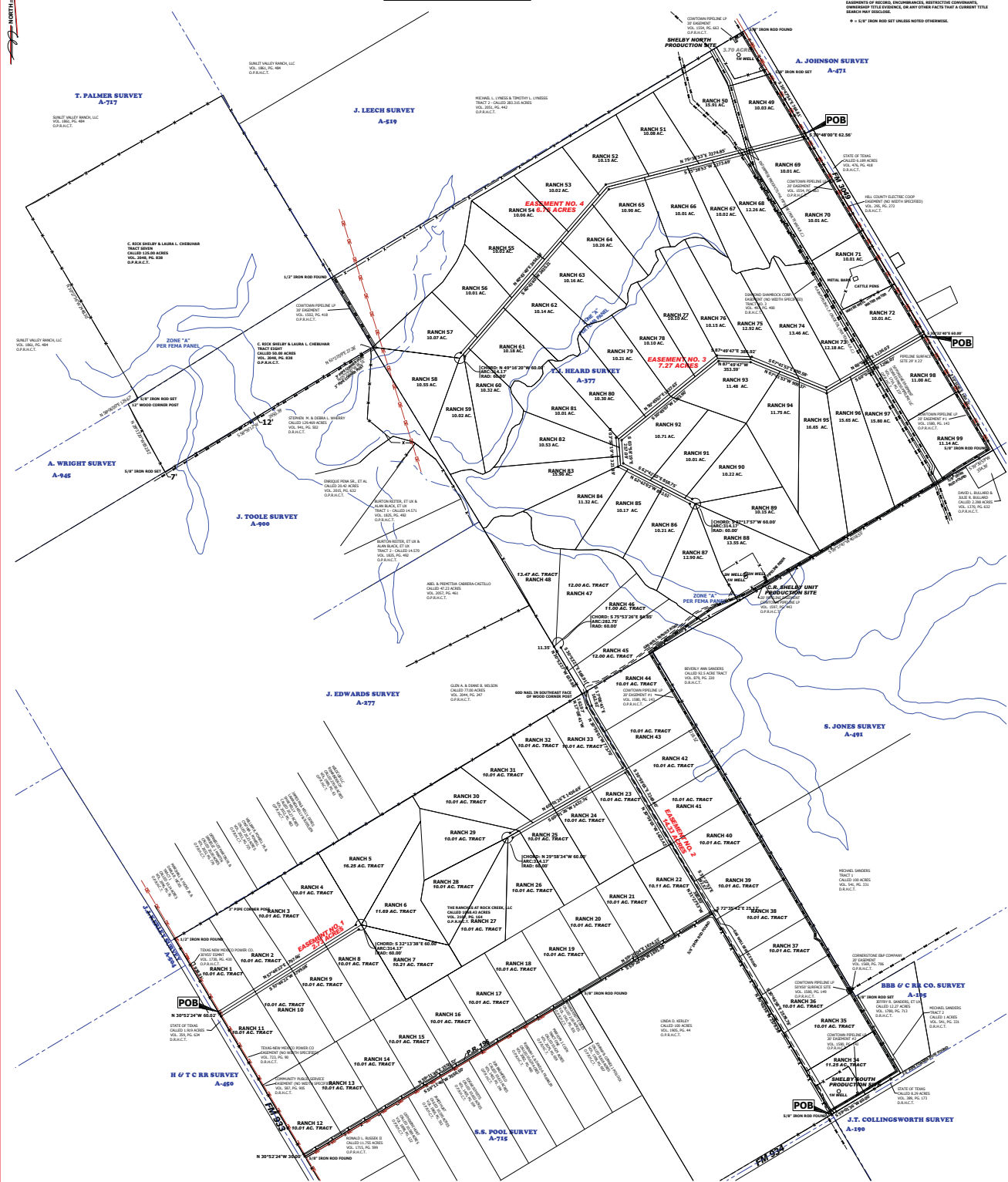
**LEGEND**

- INDICATES EASEMENT BOUNDARY
- INDICATES SURVEY BOUNDARY
- INDICATES OVERHEAD ELECTRIC LINE
- INDICATES FENCE
- INDICATES APPROXIMATE LOCATION OF BURIED PIPELINES

THIS PROPERTY IS PARTIALLY LOCATED IN FLOOD ZONE 17 AREAS DETERMINED BY AN ORDER OF THE U.S. ARMY CORPS OF ENGINEERS AS SHOWN ON FLOOD ZONE MAPS FOR THE AREA OF HILL COUNTY, TEXAS, AND IS SUBJECT TO THE FLOOD ZONE 17 REGULATIONS OF THE U.S. ARMY CORPS OF ENGINEERS.

UTILITIES SHOWN REFLECT ONLY THOSE THAT WERE VISIBLE APPARENT AND FOUND DURING THE COURSE OF THE SURVEY OR EASEMENT LOCATIONS. THEREFORE, THE LOCATION OF ANY UTILITIES NOT SHOWN ON THIS SURVEY MAP SHOULD BE DETERMINED BY AN INDEPENDENT SEARCH FOR EASEMENTS OF RECORD, ENGINEERING, INSPECTIVE CONSULTANTS, OR ANY OTHER PARTY THAT A CURRENT TIME SEARCH MAY DISCLOSE.

\* 4" P.I. FROM ROD SET UNLESS NOTED OTHERWISE.



**EASEMENT NO. 1, 2.73 ACRES**

A strip of land in Hill County, Texas, containing 2.73 acres within the S. B. Pool Survey, Abstract No. 715, being a portion of the called 1088.43 acre tract described in the deed to The Ranches at Rock Creek, L.L.C. recorded in Volume 2107, Page 164, Official Public Records of Hill County, Texas, and being more particularly described as follows:

Beginning at a 5/8 inch iron rod set in the west line of said 1088.43 acre tract and the east right-of-way line of F.M. Highway 535; bearing South 30 degrees 52 minutes 24 seconds East a distance of 538.57 feet from a 1/2 inch iron rod set for the westerly northwestern corner of said 1088.43 acre tract and the southeast corner of the called 10.14 acre tract described in the deed to Margaret B. Hicks, Jr. and Dana B. Hicks, recorded in Volume 2044, Page 78, Official Public Records of Hill County, Texas.

Thence North 57 degrees 48 minutes 22 seconds East for a distance of 1707.66 feet to a 5/8 inch iron rod set for a corner at the beginning of a curve to the right having a radius of 60.00 feet and an arc length of 314.17 feet, being subtended by a chord of South 32 degrees 13 minutes 38 seconds West for a distance of 60.00 feet to a 5/8 inch iron rod set for a corner.

Thence South 17 degrees 48 minutes 22 seconds East for a distance of 1799.50 feet to a 5/8 inch iron rod set in the west line of said 1088.43 acre tract and the east right-of-way line of F.M. Highway 535.

Thence North 30 degrees 52 minutes 24 seconds West with said right-of-way line and the west line of said 1088.43 acre tract for a distance of 60.00 feet to the point of beginning.

**EASEMENT NO. 4, 14.33 ACRES**

A strip of land in Hill County, Texas, containing 14.33 acres within the S. B. Pool Survey, Abstract No. 715, and the B.B. & C. Crarr Co. Survey, Abstract No. 195, being a portion of the called 1088.43 acre tract described in the deed to The Ranches at Rock Creek, L.L.C. recorded in Volume 2107, Page 164, Official Public Records of Hill County, Texas, and being more particularly described as follows:

Beginning at a 5/8 inch iron rod set in the north-south line of the F.M. Highway 535 for the southerly southwest corner of said 1088.43 acre tract and the northeast corner of the called 10.14 acre tract described in the deed to Linda O. Henty, recorded in Volume 1905, Page 44, Official Public Records of Hill County, Texas.

Thence North 30 degrees 52 minutes 24 seconds East with the common line of said 1088.43 acre tract and said 10.14 acre tract, same being the common line of said S.B. & C. Crarr Co. Survey and said tract for a distance of 2778.58 feet to a 5/8 inch iron rod set for the northwestern corner of said 100 acre tract and southeast corner of said Tract Three.

Thence South 58 degrees 20 minutes 46 seconds West with the south line of said 1088.43 acre tract and north of said 100 acre tract for a distance of 1891.07 feet to a 5/8 inch iron rod set for the northwestern corner of said 100 acre tract.

Thence South 58 degrees 20 minutes 46 seconds West with the south line of said 1088.43 acre tract and north of said 100 acre tract for a distance of 3550.50 feet to a 5/8 inch iron rod set for the westerly southwest corner of said 1088.43 acre tract, in the east right-of-way of F.M. Highway 535.

Thence North 30 degrees 52 minutes 24 seconds West with said right-of-way line and the west line of said 1088.43 acre tract for a distance of 30.00 feet to a 5/8 inch iron rod set for a corner.

Thence North 59 degrees 11 minutes 44 seconds East for a distance of 3550.57 feet to a 5/8 inch iron rod set for a corner.

Thence North 59 degrees 25 minutes 04 seconds East for a distance of 1074.23 feet to a 5/8 inch iron rod set for a corner.

Thence North 31 degrees 27 minutes 53 seconds West for a distance of 380.62 feet to a 5/8 inch iron rod set for a corner.

Thence North 31 degrees 27 minutes 53 seconds West for a distance of 1423.43 feet to a 5/8 inch iron rod set for a corner.

Thence South 60 degrees 01 minutes 29 seconds West for a distance of 1437.74 feet to a 5/8 inch iron rod set for a corner at the beginning of a curve to the right having a radius of 60.00 feet.

Thence along said curve to the right having a radius of 60.00 feet and an arc length of 314.17 feet, being subtended by a chord of North 29 degrees 58 minutes 34 seconds West for a distance of 60.00 feet to a 5/8 inch iron rod set for a corner.

Thence North 60 degrees 01 minutes 29 seconds East for a distance of 673.70 feet to a 5/8 inch iron rod set for a corner.

Thence South 31 degrees 27 minutes 53 seconds East for a distance of 262.97 feet to a 5/8 inch iron rod set for a corner.

Thence South 72 degrees 36 minutes 42 seconds East for a distance of 252.12 feet to a 5/8 inch iron rod set for a corner.

Thence North 60 degrees 01 minutes 29 seconds East for a distance of 2078.77 feet to a 5/8 inch iron rod set for a corner in the north-south right-of-way line of F.M. Highway 534 and south line of said 1088.43 acre tract.

Thence North 60 degrees 01 minutes 29 seconds West with said right-of-way line for a distance of 60.00 feet to the point of beginning.

**EASEMENT NO. 3, 7.27 ACRES**

A strip of land in Hill County, Texas, containing 7.27 acres within the T.J. Heard Survey, Abstract No. 377, being a portion of the called 1088.43 acre tract described in the deed to The Ranches at Rock Creek, L.L.C. recorded in Volume 2107, Page 164, Official Public Records of Hill County, Texas, and being more particularly described as follows:

Beginning at a 5/8 inch iron rod set for a corner in the east line of said 1088.43 acre tract and the westerly right-of-way line of F.M. Highway 504; bearing South 30 degrees 52 minutes 24 seconds East a distance of 1461.21 feet to a 5/8 inch iron rod set for a corner.

Thence South 60 degrees 02 minutes 01 seconds West for a distance of 892.07 feet to a 5/8 inch iron rod set for a corner.

Thence North 67 degrees 49 minutes 47 seconds West for a distance of 302.37 feet to a 5/8 inch iron rod set for a corner.

Thence North 67 degrees 49 minutes 47 seconds West for a distance of 382.92 feet to a 5/8 inch iron rod set for a corner.

Thence South 03 degrees 58 minutes 19 seconds East for a distance of 297.00 feet to a 5/8 inch iron rod set for a corner.

Thence North 62 degrees 02 minutes 03 seconds East for a distance of 898.76 feet to a 5/8 inch iron rod set for a corner at the beginning of a curve to the right having a radius of 60.00 feet and an arc length of 314.17 feet, being subtended by a chord of South 27 degrees 17 minutes 07 seconds West for a distance of 60.00 feet to a 5/8 inch iron rod set for a corner.

Thence North 62 degrees 02 minutes 03 seconds West for a distance of 892.51 feet to a 5/8 inch iron rod set for a corner.

Thence North 03 degrees 58 minutes 19 seconds West for a distance of 1437.88 feet to a 5/8 inch iron rod set for a corner.

Thence South 07 degrees 49 minutes 47 seconds East for a distance of 382.92 feet to a 5/8 inch iron rod set for a corner.

Thence South 07 degrees 49 minutes 47 seconds East for a distance of 890.58 feet to a 5/8 inch iron rod set for a corner.

Thence North 60 degrees 02 minutes 01 seconds East for a distance of 1236.03 feet to a 5/8 inch iron rod set for a corner in the east line of said 1088.43 acre tract and west right-of-way line of F.M. Highway 504.

Thence North 30 degrees 52 minutes 24 seconds East with said right-of-way line for a distance of 60.00 feet to the point of beginning.

**EASEMENT NO. 4, 6.75 ACRES**

A strip of land in Hill County, Texas, containing 6.75 acres within the T.J. Heard Survey, Abstract No. 377, being a portion of the called 1088.43 acre tract described in the deed to The Ranches at Rock Creek, L.L.C. recorded in Volume 2107, Page 164, Official Public Records of Hill County, Texas, and being more particularly described as follows:

Beginning at a 5/8 inch iron rod set for a corner in the east line of said 1088.43 acre tract and the westerly right-of-way line of F.M. Highway 504; bearing South 30 degrees 52 minutes 24 seconds East a distance of 784.41 feet from which a 5/8 inch iron rod set for the northwestern corner of said 1088.43 acre tract and the northeast corner of the called 2.98 acre tract described in the deed to Daniel L. and Julie F. Sauer, bears South 30 degrees 52 minutes 24 seconds East a distance of 1461.21 feet to a 5/8 inch iron rod set for a corner.

Thence South 30 degrees 48 minutes 00 seconds East with said right-of-way line for a distance of 62.56 feet to a 5/8 inch iron rod set for a corner.

Thence South 75 degrees 38 minutes 53 seconds West for a distance of 227.69 feet to a 5/8 inch iron rod set for a corner.

Thence South 40 degrees 43 minutes 42 seconds West for a distance of 2432.11 feet to a 5/8 inch iron rod set for a corner.

Thence along a curve to the right having a radius of 60.00 feet and an arc length of 314.17 feet, being subtended by a chord of North 49 degrees 18 minutes 20 seconds West for a distance of 60.00 feet to a 5/8 inch iron rod set for a corner.

Thence North 40 degrees 43 minutes 42 seconds East for a distance of 2434.08 feet to a 5/8 inch iron rod set for a corner.

Thence North 75 degrees 38 minutes 53 seconds East for a distance of 2274.85 feet to the point of beginning.

**HILL COUNTY, TEXAS**

**T.J. HEARD SURVEY, ABSTRACT NO. 377, S.B. & C. CRARR CO. SURVEY, ABSTRACT NO. 195, AND B.B. & C. CRARR CO. SURVEY, ABSTRACT NO. 105**

**4 ACCESS EASEMENTS**

**National Land Partners**

9649

11/11/2008

11/11/2008

11/11/2008

**HILL COUNTY, TEXAS**

**T.J. HEARD SURVEY, ABSTRACT NO. 377, S.B. & C. CRARR CO. SURVEY, ABSTRACT NO. 195, AND B.B. & C. CRARR CO. SURVEY, ABSTRACT NO. 105**

**4 ACCESS EASEMENTS**

**National Land Partners**

9649

11/11/2008

11/11/2008

11/11/2008

**HILL COUNTY, TEXAS**

**T.J. HEARD SURVEY, ABSTRACT NO. 377, S.B. & C. CRARR CO. SURVEY, ABSTRACT NO. 195, AND B.B. & C. CRARR CO. SURVEY, ABSTRACT NO. 105**

**4 ACCESS EASEMENTS**

**National Land Partners**

9649

11/11/2008

11/11/2008

11/11/2008

**HILL COUNTY, TEXAS**

**T.J. HEARD SURVEY, ABSTRACT NO. 377, S.B. & C. CRARR CO. SURVEY, ABSTRACT NO. 195, AND B.B. & C. CRARR CO. SURVEY, ABSTRACT NO. 105**

**4 ACCESS EASEMENTS**

**National Land Partners**

9649

11/11/2008

11/11/2008

11/11/2008

**HILL COUNTY, TEXAS**

**T.J. HEARD SURVEY, ABSTRACT NO. 377, S.B. & C. CRARR CO. SURVEY, ABSTRACT NO. 195, AND B.B. & C. CRARR CO. SURVEY, ABSTRACT NO. 105**

**4 ACCESS EASEMENTS**

**National Land Partners**

9649

11/11/2008

11/11/2008

11/11/2008

**EXHIBIT "B"**